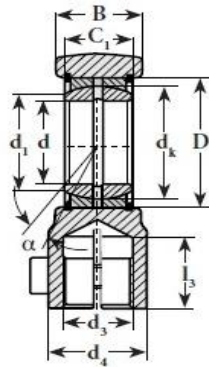
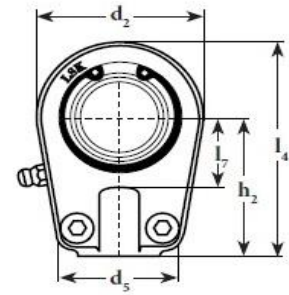
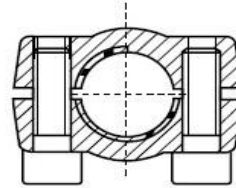


Rod ends for hydraulic components

TAPR.U



TAPR.U



Designation	Dimensions (mm)															Degrees	Bolt locking	Locking torque	Rating load		Weight
	d	d ₁	d ₂	d ₃	d ₄	d ₅	d _k	B	C ₁	D	h ₂	l ₃	l ₄	l ₇	α				M _A -Nm	Dinamyc C	
																		KN		KN	
TAPR 520 U	20	24,1	56	M16X1,5	25	41	29	19	16	35	50	17	78	25	9	M6x16	13	30	72	0,43	
TAPR 525 U	25	29,3	56	M16x1,5	25	41	35,5	23	20	42	50	17	78	25	7	M6x20	13	48	72	4,48	
TAPR 530 U	30	34,2	64	M22x1,5	32	46	40,7	28	22	47	60	23	92	30	6	M6x25	13	62	106	0,74	
TAPR 535 U	35	39,7	78	M28x1,5	40	58	47	30	25	55	70	29	109	38	6	M8x25	32	80	153	1,2	
TAPR 540 U	40	45	94	M35x1,5	49	66	53	35	28	62	85	36	132	45	7	M8x30	32	100	250	2	
TAPR 550 U	50	55,9	116	M45X1,5	61	88	60	40	35	68	105	46	163	55	6	M10x35	64	156	365	3,8	
TAPR 560 U	60	66,8	130	M58x1,5	75	90	66	50	44	75	130	59	200	65	6	M10x45	46	245	400	5,4	
TAPR 570 U	70	77,8	154	M65x1,5	86	##	80	55	49	90	150	66	232	75	6	M12x50	80	315	540	8,5	
TAPR 580 U	80	80,4	176	M80x2	102	##	92	60	55	105	170	81	265	80	6	M16x50	195	400	670	12	
TAPR 590 U	90	98,1	206	M100x2	124	##	105	65	60	120	210	101	323	90	5	M16x60	195	490	980	21,5	
TAPR 595 U	100	109,5	230	M110x2	138	##	115	70	70	130	235	111	360	105	7	M20x60	385	610	1120	27,5	