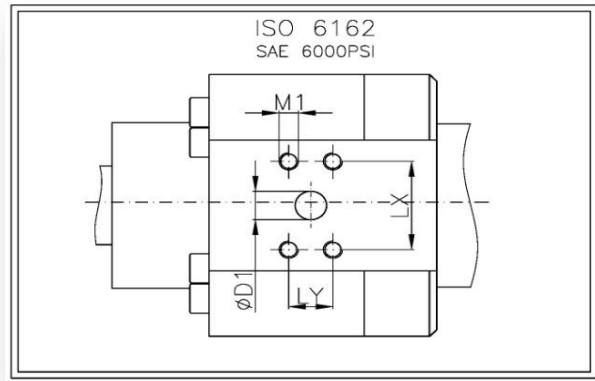
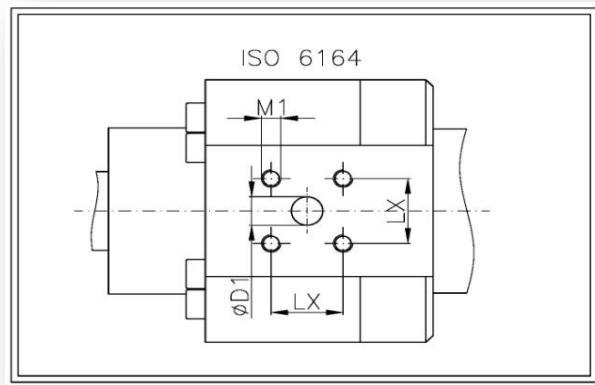


Flange connections



ISO 6162 (400bar) (SAE= 6000PSI)						
ØD	SAE	ØD1	LX ±0.25	LY ±0.25	M1	P(bar)
40						
50						
63						
80	1/2	13	40.5	18.2	M8	400
100	1/2	13	40.5	18.2	M8	400
125	3/4	19	50.8	23.8	M10	400
140	1	25	57.2	27.8	M12	400
160	1	25	57.2	27.8	M12	400
180	1 1/4	32	66.6	31.8	M14	400
200	1 1/4	32	66.6	31.8	M14	400



ISO 6164 (400bar)				
ØD	ØD1	LX ±0.25	M1	P(bar)
40	10	24.7	M6	400
50	10	24.7	M6	400
63	13	29.7	M8	400
80	13	29.7	M8	400
100	19	35.4	M8	400
125	25	43.8	M10	400
140	25	43.8	M10	400
160	32	51.6	M12	400
180	32	51.6	M12	400
200	38	60.1	M16	400